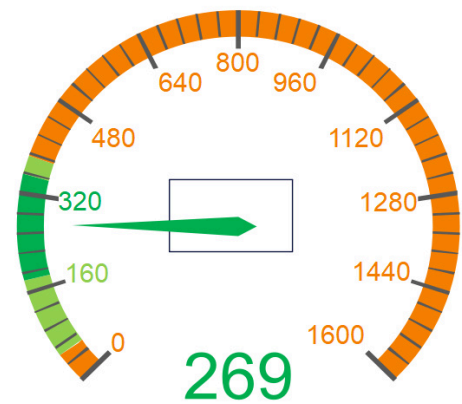


# GME-ST500 36V 35A



8 HOUR STANDARD CHARGE: 269 Ah BATTERY  
IDEAL FOR BATTERIES: 180 - 350 Ah

(SUITABLE FOR BATTERIES: 50 - 380 Ah)

**GM Electric Single Phase High Frequency Battery Charger ideal for 36 Volt Gel, AGM or Lead-Acid Batteries with 180 – 350Ah capacities.**

- 230Vac  $\pm 10\%$  50/60Hz single phase power supply
- Supplied with AC 10A Single Phase 3 Flat Pin Plug
- Optional Anderson or REMA DIN DC plugs available for installation
- Max Input Current: 10.0 Amps
- Max Input Power: 1,742 W
- Max Output Power: 1,515 W
- Switching mode technology
- Setting battery charge-curve throughout internal dip-switches: lead acid, gel, agm
- Setting charge parameters throughout internal dip-switches
- Automatic start
- Current control precision  $\pm 1A$
- Voltage control precision  $\pm 0,1V$
- Efficiency  $\geq 90\%$
- Charge cycle managed by microcontroller
- Forced ventilation
- Charge stage and alarms indicated by led lights
- Thermally protected with internal probe
- Battery polarity inversion protection
- Charge stopping at battery disconnection
- Possibility to on-board mounting with remote led-bulb indicator (led-bulb indicator is an optional)
- Machine block relay
- Dimensions: 344 x 195 x 75 mm
- Weight: 2.5 Kg

0413 015 775

[hello@forkliftbatterychargersdirect.com.au](mailto:hello@forkliftbatterychargersdirect.com.au)

[www.forkliftbatterychargersdirect.com.au](http://www.forkliftbatterychargersdirect.com.au)

