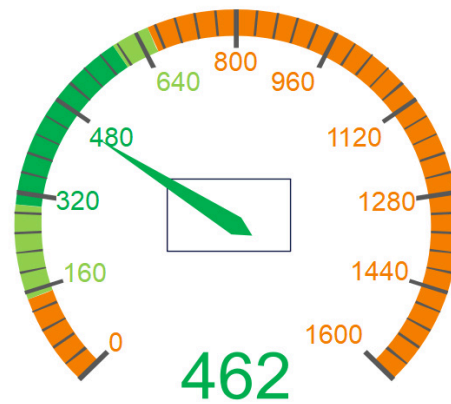


GME-HF2 36V 60A



8 HOUR STANDARD CHARGE: 462 Ah BATTERY
IDEAL FOR BATTERIES: 300 - 600 Ah

(SUITABLE FOR BATTERIES: 150 - 660 Ah)

GM Electric Single Phase High Frequency Battery Charger ideal for 36 Volt Gel, AGM or Lead-Acid Batteries with 300 – 600Ah capacities.

- 230Vac $\pm 10\%$ 50/60Hz single phase power supply
- Supplied with AC 15A Single Phase 3 Flat Pin Plug
- Optional Anderson or REMA DIN DC plugs available for installation
- Max Input Current: 15.0 Amps
- Max Input Power: 2,530 W
- Max Output Power: 2,200 W
- Switching mode technology
- Current control precision $\pm 1A$
- Voltage control precision $\pm 0,1V$
- Efficiency $\approx 90\%$
- Charge cycle managed by microcontroller
- Setting of charge cycle and parameters (current, post-charge time, post-charge voltage, start type) via buttons and knob without an external console
- Real time parameters visualisation such as current, voltage, supplied Ah, time
- Storage and visualisation of the last 20 charge cycles, 10 alarms and worked hours
- Automatic or manual start
- Double thermal protection
- Battery polarity inversion protection by fuse
- Forced ventilation
- Charge stopping at battery disconnection
- Dimensions: 390 x 230 x 115 mm
- Weight: 9 Kg

0413 015 775

hello@forkliftbatterychargersdirect.com.au

www.forkliftbatterychargersdirect.com.au

