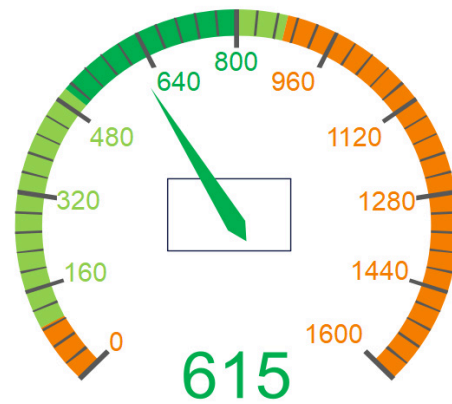


# GME-HF2 24V 80A



8 HOUR STANDARD CHARGE: 615 Ah BATTERY  
IDEAL FOR BATTERIES: 500 - 800 Ah

(SUITABLE FOR BATTERIES: 100 - 880 Ah)

## GM Electric Single Phase High Frequency Battery Charger ideal for 24 Volt Gel, AGM or Lead-Acid Batteries with 500 – 800Ah capacities.

- 230Vac  $\pm 10\%$  50/60Hz single phase power supply
- Supplied with AC 15A Single Phase 3 Flat Pin Plug
- Optional Anderson or REMA DIN DC plugs available for installation
- Max Input Current: 11.0 Amps
- Max Input Power: 2,588 W
- Max Output Power: 2,250 W
- Switching mode technology
- Current control precision  $\pm 1A$
- Voltage control precision  $\pm 0,1V$
- Efficiency  $\approx 90\%$
- Charge cycle managed by microcontroller
- Setting of charge cycle and parameters (current, post-charge time, post-charge voltage, start type) via buttons and knob without an external console
- Real time parameters visualization such as current, voltage, supplied Ah, time
- Storage and visualization of the last 20 charge cycles, 10 alarms and worked hours
- Automatic or manual start
- Double thermal protection
- Battery polarity inversion protection by fuse
- Forced ventilation
- Charge stopping at battery disconnection
- Dimensions: 390 x 230 x 115 mm
- Weight: 9 Kg

0413 015 775

[hello@forkliftbatterychargersdirect.com.au](mailto:hello@forkliftbatterychargersdirect.com.au)

[www.forkliftbatterychargersdirect.com.au](http://www.forkliftbatterychargersdirect.com.au)

