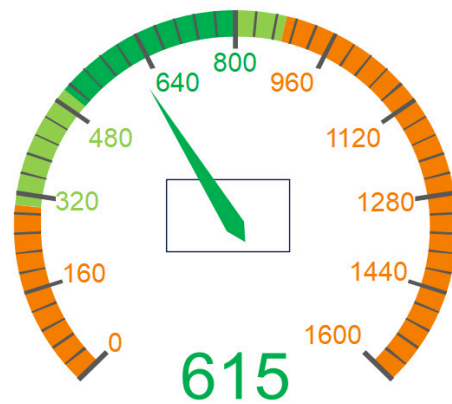


GME-H10 36V & 48V (Multi Voltage) 80A



8 HOUR STANDARD CHARGE: 615 Ah BATTERY
IDEAL FOR BATTERIES: 500 - 800 Ah

(SUITABLE FOR BATTERIES: 300 - 880 Ah)

GM Electric Three Phase High Frequency Battery Charger ideal for 36 & 48 Volt Gel, AGM or Lead-Acid Batteries with 500 – 800Ah capacities.

- Three-phase power supply voltage 400Vac $\pm 10\%$ 50-60Hz
- Supplied with AC 10A Three Phase 4 Round Pin Plug
- Optional Anderson or REMA DIN DC plugs available for installation
- Max Input Current: 8.4 Amps
- Max Input Power: 5,299 W
- Max Output Power: 4,608 W
- High-performance ZVT Switching technology
- Efficiency $\approx 95\%$
- Form factor $\approx 92\%$
- Current control precision $\pm 1A$
- Voltage control precision $\pm 0.1V$
- Compensation of the voltage drop on the battery cables
- Charging process managed by microprocessor
- Charging current programmable via buttons
- For batteries: lead acid, gel, AGM, lithium
- Can-bus communication for lithium batteries
- Possibility to set using buttons: time, final charging voltage
- Possibility of desulphating batteries simply and quickly
- Programmable equalisation function
- Display of current, voltage, Ah and time during charging
- Storage and display of 1000 charging cycles: date/time, relevant data and warnings & alarms
- Export of memories via Wi-Fi connection
- Program update via Wi-Fi
- Automatic or manual start
- Double thermal protection
- Protected against battery polarity inversion
- Thermostated forced ventilation
- Charging interruption when battery is disconnected
- Dimensions: 490 x 350 x 115 mm
- Weight: 15 kg including cables

0413 015 775

hello@forkliftbatterychargersdirect.com.au

www.forkliftbatterychargersdirect.com.au

